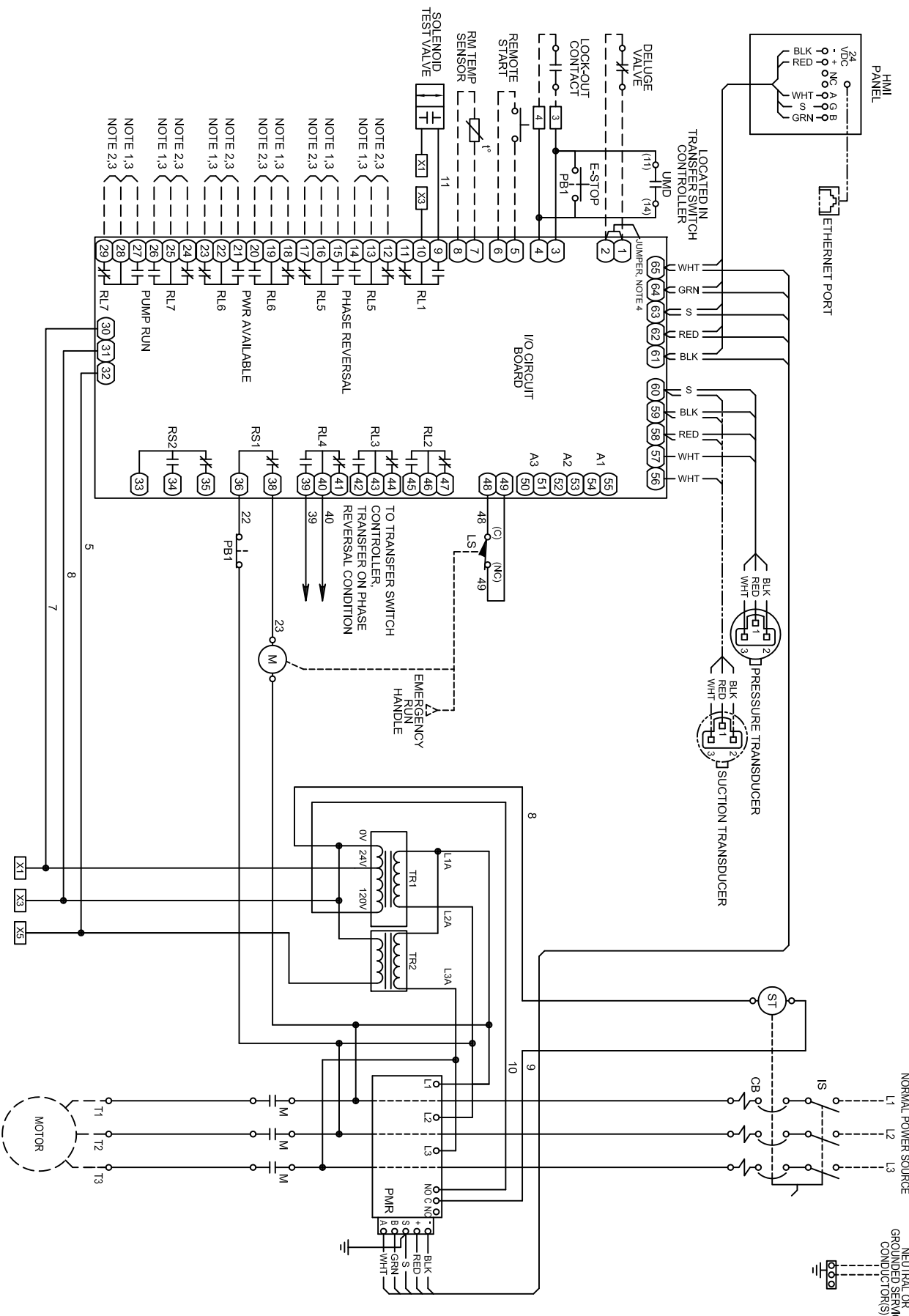


# 1-03901-01 A

REVISIONS	NEW RELEASE PER ECN L00141
REV A: 05-24-10	REVERSE N.O. & N.C. CONTACTS OF RL1, RL2 & TR3 ADDED. ADD TEST SOLENOID TO RL1.
ECN E0705, L&T	

SUITABLE FOR USE AS SERVICE EQUIPMENT



- NOTES:
- 1 - NORMALLY OPEN, CLOSURES TO ALARM
  - 2 - NORMALLY CLOSED, OPENS TO ALARM
  - 3 - CONTACT RATING: 5 AMP MAX. 240 VAC. 30 VDC
  - 4 - REMOVE JUMPER WHEN DELUGE VALVE IN USE

- DRAWING LEGEND
- - - CUSTOMER SUPPLIED COMPONENT OR WIRING
  - CUSTOMER CONNECTION TERMINAL BLOCK
  - I/O CIRCUIT BOARD CONNECTION
  - DEVICE TERMINATION AND DESIGNATION
  - OPTIONAL EQUIPMENT

TITLE BUL. 10630 FIRE PUMP CONTROLLERS.  
 MADE BY SDC APP'D DJD  
 DATE 04/28/08

JOSEPH CLARK CONTROLS, LLC  
 ELIZABETHTOWN, NC 28337 USA

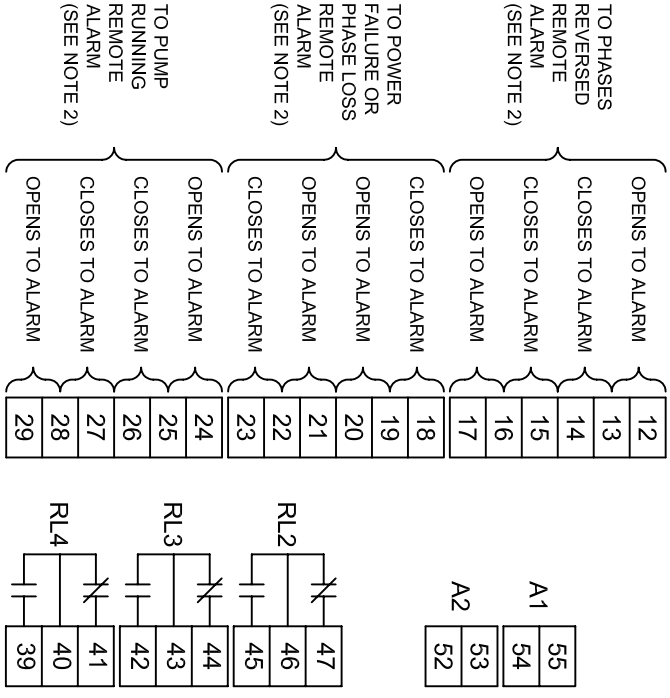
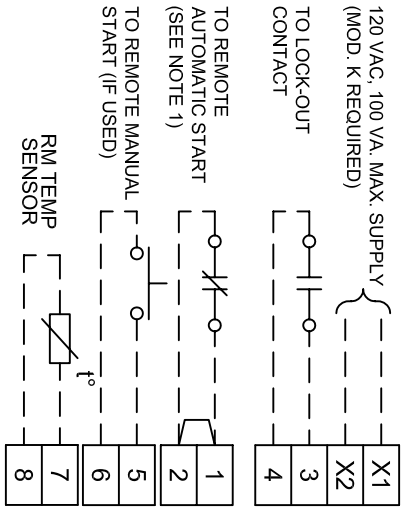
A 10-10630-1  
 SHEET 1 OF 1

DES. DWG. **E**  
 REV. **A**

# 2-03901-01 A

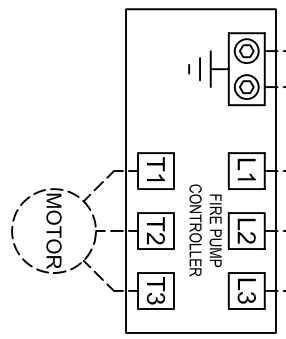
## REVISIONS

NEW RELEASE PER EGN L00141
REV. A: G SERIES PRODUCT LAUNCH PER EGN E00787



- NOTES:**
- REMOVE JUMPER IF A REMOTE AUTOMATIC START DEVICE IS USED. THE CONTACT ON THE DEVICE OPEN TO START THE PUMP.
  - ALARM CONTACT RATING: 5 AMP MAX, 240 VAC, 30 VDC.

NEUTRAL OR GROUNDED SERVICE (NORMAL POWER)



WATER PRESSURE CONNECTION  
1/2" FNPT

# SUITABLE FOR USE AS SERVICE EQUIPMENT

## LINE TERMINAL LUG SIZE (PER PHASE)

HORSEPOWER	WIRE CAPACITY (COPPER WIRE)			
	200V.	230V.	380V.	415 V.
200V.	230V.	380V.	415 V.	460 V.
5 - 25	5 - 30	5 - 50	5 - 60	5 - 60
30	---	60	75	75
40 - 60	40 - 75	75 - 125	100 - 150	100 - 150
75 - 150	100 - 200	150 - 350	200 - 350	200 - 400
200	250	400	400-450	450 - 500
---	---	5	5	5
5 - 60	5 - 75	7.5 - 100	7.5 - 100	7.5 - 150
75 - 100	100 - 125	125 - 200	125 - 200	200 - 250

## MOTOR TERMINAL LUG SIZE (PER PHASE)

G SERIES		F SERIES	
5 - 15	5 - 20	5 - 30	5 - 30
20 - 30	35 - 30	40 - 60	40 - 60
40 - 50	40 - 60	75 - 100	75 - 100
60 - 100	75 - 125	125 - 200	125 - 200
125 - 200	150 - 250	250 - 400	250 - 450
5 - 30	5 - 30	5 - 50	5 - 50
40 - 50	40 - 60	60 - 100	60 - 100
5 - 30	5 - 30	5 - 50	5 - 60
40 - 50	40 - 60	60 - 100	75 - 125
5 - 30	5 - 30	5 - 50	75 - 125
40 - 50	40 - 60	60 - 100	75 - 125

## NEUTRAL OR GROUNDING CONDUCTORS

5 - 25	30 - 60	75 - 100	125 - 200	5 - 30	40 - 50	5 - 30	40 - 50	5 - 50	60 - 100	5 - 60	60 - 100	5 - 60	60 - 100	5 - 75	100 - 200	250 - 350	400 - 500
(2) #14 AWG - #1/0 AWG	(2) #6 AWG - 250 KCMIL	(2) #2 AWG - 600 KCMIL	(4) #6 AWG - 600 KCMIL	(1) #9 AWG - #5 AWG	(1) #6 AWG - 300 KCMIL	(1) #6 AWG - 300 KCMIL	(1) #6 AWG - 300 KCMIL	(2) #4 AWG - 500 KCMIL	(1) #9 AWG - #5 AWG	(1) #6 AWG - 300 KCMIL	(1) #6 AWG - 300 KCMIL	(1) #6 AWG - 300 KCMIL	(2) #4 AWG - 500 KCMIL	(2) #14 AWG - #1/0 AWG	(2) #6 AWG - 250 KCMIL	(2) #2 AWG - 600 KCMIL	(4) #6 AWG - 600 KCMIL

### CONDUCTOR NOTES

- FOR PROPER WIRE SIZING, REFER TO THE NATIONAL ELECTRICAL CODE, NFPA 70 OR OTHER LOCAL CODES.
- CONTROLLER IS PHASE ROTATION SENSITIVE. OBSERVE PHASE ROTATION, L1-L2-L3 MUST BE IN ABC SEQUENCE.
- THE LINE AND MOTOR TERMINALS WILL ACCOMMODATE, AS A MINIMUM, COPPER CABLES CAPABLE OF CARRYING 125% OF THE MOTOR FULL LOAD CURRENT.

TITLE: BUL. 10630 FIRE PUMP CONTROLLERS.  
 ACROSS THE LINE STARTING

MADE BY: SDC      APP'D: DJD  
 DATE: 05/30/08

**JOSLYN CLARK CONTROLS, LLC**  
 LANCASTER, SC USA 29720-8842

**A 10-10630-2**