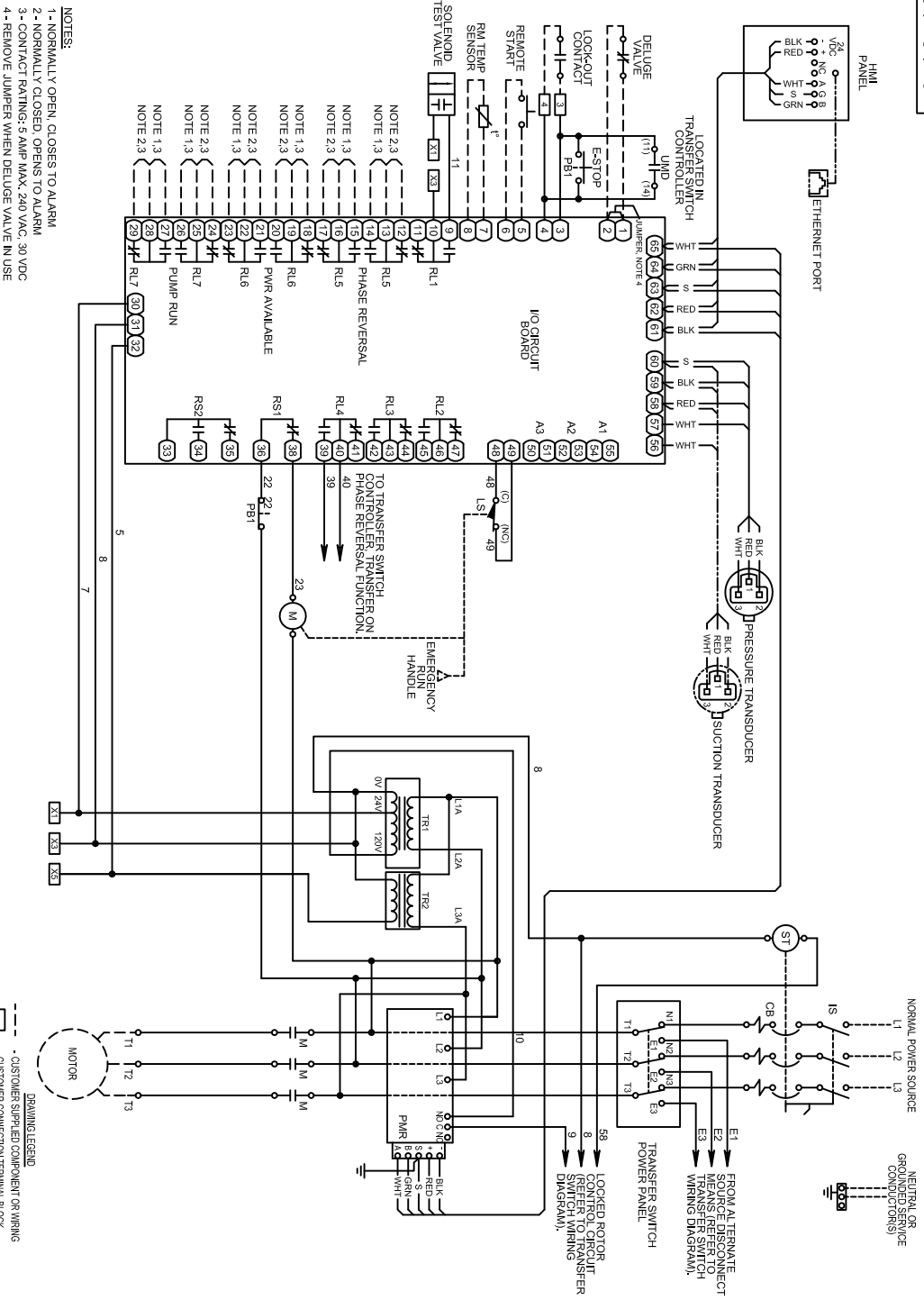


REVISIONS	NEW RELEASE
PER EON L00141	REV/A: 05-24-10
	N.C. CONTACTS OF
	RL1, TR2 & TR3
	ADDED, ADD TEST
	SOLENOID TO RL1,
	EON E00705, L&T



NOTES:

- 1- NORMALLY OPEN, CLOSERS TO ALARM
- 2- NORMALLY CLOSED, OPENS TO ALARM
- 3- CONTACT RATING: 5 AMP MAX, 240 VAC, 30 VDC
- 4- REMOVE JUMPER WHEN DELUGE VALVE IN USE

TITLE: BUL-10630 FIRE PUMP CONTROLLERS, ACROSS THE LINE MADE BY: SDC APP'D: DJD

STARTING WITH TRANSFER SWITCH (DUAL UTILITY CONTROL) DATE: 04/28/08

SCALE: 0:8

JOSLYN CLARK **JOSLYN CLARK CONTROLS, LLC** FILE: 10630-1-E

ELIZABHTOWN, NC 28837 USA

A 10-10630-21 SHEET 1 OF 1

DESIGN LEGEND:

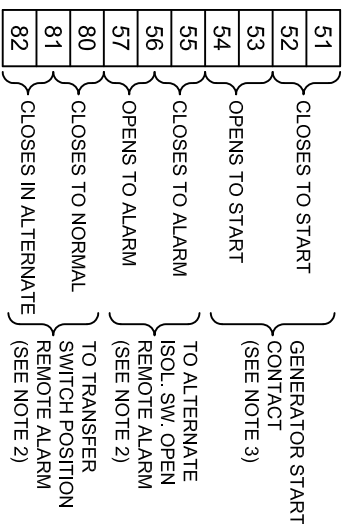
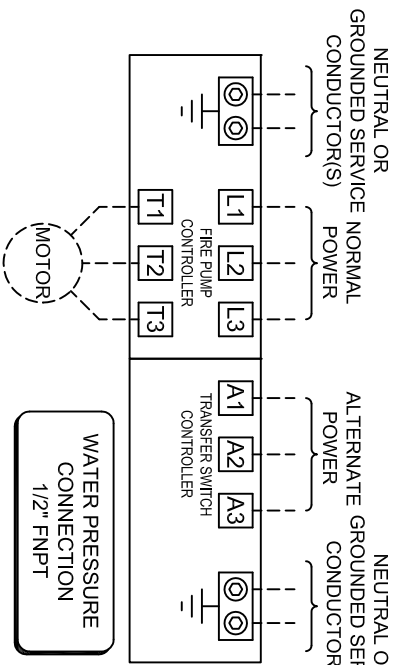
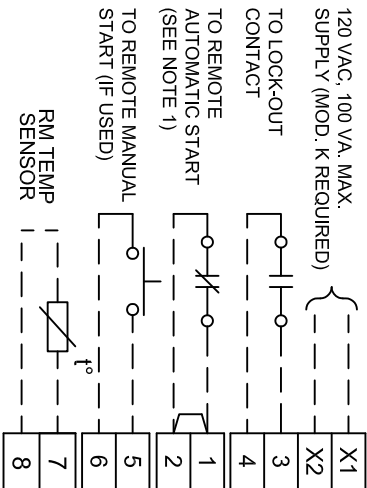
- - - CUSTOMER SUPPLIED COMPONENT OR WIRING
- CUSTOMER CONNECTION TERMINAL BLOCK
- I/O CIRCUIT BOARD CONNECTION
- DEVICE TERMINATION AND DESIGNATION
- OPTIONAL EQUIPMENT

RESERVED

22-03901-01 A

REVISIONS

NEW RELEASE PER ECN L00141
REV A: G SERIES PRODUCT LAUNCH PER ECN E00787



SUITABLE FOR USE AS SERVICE EQUIPMENT

LINE TERMINAL LUG SIZE (PER PHASE)

HORSEPOWER	WIRE CAPACITY (COPPER WIRE)		
	200 V.	230 V.	380 V.
5 - 25	5 - 30	5 - 50	5 - 60
30	---	60	75
40 - 60	40 - 75	75 - 125	100 - 150
75 - 150	100 - 200	150 - 350	200 - 350
200	250	400	400-450
---	---	5	5
5 - 60	5 - 75	7.5 - 100	7.5 - 100
75 - 100	100 - 125	125 - 200	125 - 200

MOTOR TERMINAL LUG SIZE (PER PHASE)

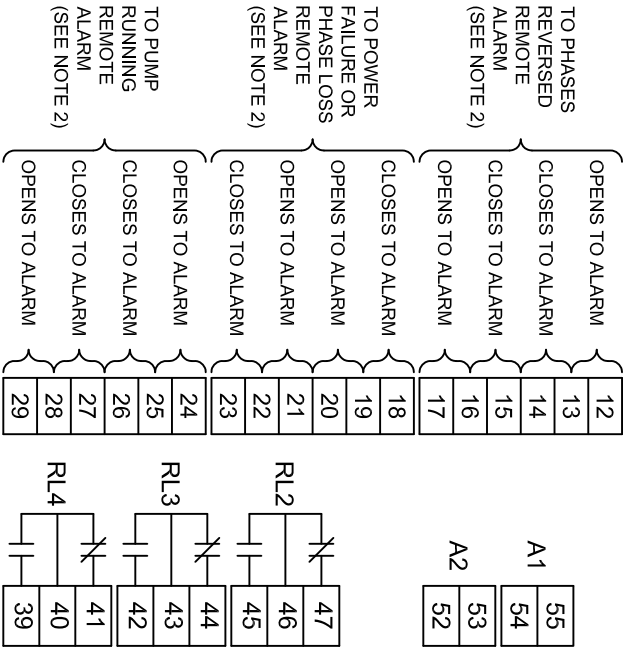
HORSEPOWER	WIRE CAPACITY (COPPER WIRE)		
	200 V.	230 V.	380 V.
5 - 15	5 - 20	5 - 30	5 - 40
20 - 30	35 - 30	40 - 60	50 - 60
40 - 50	40 - 60	75 - 100	75 - 125
60 - 100	75 - 125	125 - 200	150 - 250
125 - 200	150 - 250	250 - 450	300 - 500
---	---	5 - 25	5 - 30
20 - 30	20 - 30	30 - 60	40 - 60
40 - 50	40 - 60	75 - 100	75 - 125
60 - 100	75 - 125	125 - 200	150 - 250

NEUTRAL OR GROUNDING CONDUCTORS

5 - 25	5 - 30	5 - 50	5 - 60	5 - 60	5 - 75
30 - 60	40 - 75	60 - 125	75 - 150	75 - 150	100 - 200
75 - 100	100 - 125	150 - 200	200 - 250	200 - 250	250 - 350
125 - 200	150 - 250	250 - 400	300 - 450	300 - 500	400 - 500

CONDUCTOR NOTES

- FOR PROPER WIRE SIZING, REFER TO THE NATIONAL ELECTRICAL CODE, NFPA 70 OR OTHER LOCAL CODES.
- CONTROLLERS IS PHASE ROTATION SENSITIVE. OBSERVE PHASE ROTATION, L1,L2,L3 MUST BE IN ABC SEQUENCE.
- THE LINE AND MOTOR TERMINALS WILL ACCOMMODATE, AS A MINIMUM, COPPER CABLES CAPABLE OF CARRYING 125% OF THE MOTOR FULL LOAD CURRENT.



NOTES:

- REMOVE JUMPER IF A REMOTE AUTOMATIC START DEVICE IS USED. THE CONTACT ON THE DEVICE OPEN TO START THE PUMP.
- ALARM CONTACT RATING: 5 AMP MAX. 240 VAC. 30 VDC.
- GENERATOR START CONTACT RATING: 5 AMP MAX. 30 VDC.

TITLE BUL. 10630 FIRE PUMP CONTROLLERS, ACROSS THE LINE STARTING WITH TRANSFER SWITCH (DUAL UTILITY CONTROL)

MADE BY SDC DATE 06/03/08

APPR DJD



JOSLYN CLARK CONTROLS, LLC
ELIZABETHTOWN, NC USA 28337

A 10-10630-22

DESIGN: **G** REV: **A**

SCALE: 1

FILE: 10630-22G

SHEET 1 OF 1