

5

Flanged-type bearing

Available in diameters  
3/16" to 1-1/2" and  
4mm to 25mm

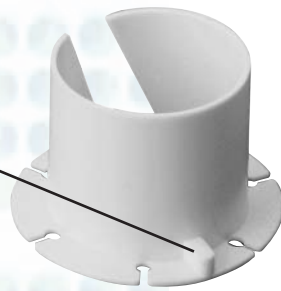


6

Flanged-type bearing  
with anti-rotation key

Available in diameters  
3/16" to 1-1/2"

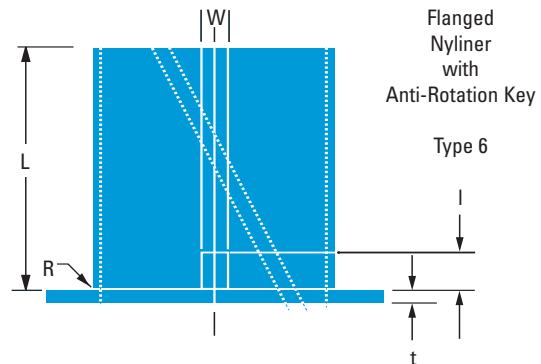
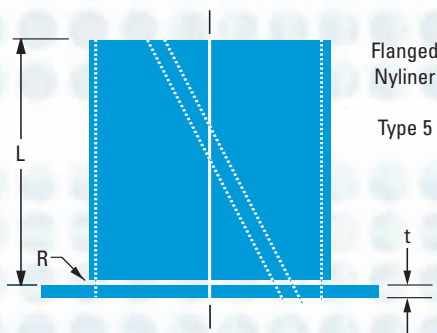
Also available in  
high-performance polymer



## Types 5 and 6

Flanges permit Types 5 and 6 Thomson Nyliner bearings to take both axial and radial loads, while providing more secure retention than plain sleeve types. (For installation recommendations, see page 11.)

**Clearances.** The minimum diametral shaft to bearing clearance normally recommended for Types 5 and 6 bearings is .001" for bearing I.D. sizes from 1.000" to 1.250"; and .002" for I.D. sizes from 1.250" to 1.500". These clearances are recommended to allow proper running clearance for trouble-free operation. Bearings will expand slightly due to frictional heat and moisture absorption. The majority of this expansion is accommodated by the compensation gap. Changes in wall thickness are minimal due to the thin wall construction of Thomson Nyliner bearings.



# Flanged Thin-Wall Split Bearings

## Dimensions (Inches)—Types 5 & 6

Bearing Number		Nominal Bearing I.D.	Bearing I.D. <sup>†</sup>		Maximum Shaft Diameter	Housing Bore	Bearing Length "L" +0, -1/64	Radius "R" Max.	Flange		Key	
Type 5	Type 6		I.D.	Tolerance					Dia. ± 1/64	"t" +0.00, -.005	"w" +0.00, -.010	"l" +0, -1/64
3L3-F	3L3-FK	3/16	0.1885	+.001 / -.000	.1875	.2340	3/16	.010	5/16	.025	1/16	1/16
4L4-F	4L4-FK	1/4	0.2510	+.001 / -.000	.2500	.2965	1/4	.010	13/32	.025	1/16	1/16
5L5-F	5L5-FK	5/16	0.3135	+.001 / -.000	.3125	.3745	5/16	.015	1/2	.030	3/32	3/32
5L7-F	5L7-FK	5/16	0.3135	+.001 / -.000	.3125	.3745	7/16	.015	1/2	.030	3/32	3/32
5L10-F	5L10-FK	5/16	0.3135	+.001 / -.000	.3125	.3745	5/8	.015	1/2	.030	3/32	3/32
6L6-F	6L6-FK	3/8	0.3760	+.001 / -.000	.3750	.4370	3/8	.015	19/32	.030	3/32	3/32
6L11-F	6L11-FK	3/8	0.3760	+.001 / -.000	.3750	.4370	11/16	.015	19/32	.030	3/32	3/32
7L7-F	7L7-FK	7/16	0.4385	+.001 / -.000	.4375	.4995	7/16	.015	21/32	.030	3/32	3/32
8L3½-F	8L3½-FK	1/2	0.5010	+.001 / -.000	.5000	.5620	7/32	.015	3/4	.030	3/32	3/32
8L5½-F	8L5½-FK	1/2	0.5010	+.001 / -.000	.5000	.5620	11/32	.015	3/4	.030	3/32	3/32
8L8-F	8L8-FK	1/2	0.5010	+.001 / -.000	.5000	.5620	1/2	.015	3/4	.030	3/32	3/32
8L12-F	8L12-FK	1/2	0.5010	+.002 / -.000	.5000	.5620	23/32	.015	3/4	1/32	1/8	1/8
10L5½-F	10L5½-FK	5/8	0.6260	+.001 / -.000	.6250	.6870	11/32	.015	15/16	.030	1/8	1/8
10L7-F	10L7-FK	5/8	0.6260	+.001 / -.000	.6250	.6870	7/16	.015	15/16	.030	1/8	1/8
10L10-F	10L10-FK	5/8	0.6260	+.001 / -.000	.6250	.6870	5/8	.015	15/16	.030	1/8	1/8
10L14-F	10L14-FK	5/8	0.6260	+.001 / -.000	.6250	.6870	7/8	.015	15/16	.030	1/8	1/8
10L18-F	10L18-FK	5/8	0.6260	+.001 / -.000	.6250	.6870	1-1/8	.015	15/16	.030	1/8	1/8
12L12-F	12L12-FK	3/4	0.7510	+.001 / -.000	.7500	.8120	3/4	.015	1-1/8	.030	1/8	1/8
12L18-F	12L18-FK	3/4	0.7510	+.001 / -.000	.7500	.8120	1-1/8	.015	1-1/8	.030	1/8	1/8
14L7½-F	14L7½-FK	7/8	0.8760	+.001 / -.000	.8750	.9370	15/32	.015	1-5/16	.030	1/8	1/8
14L14-F	14L14-FK	7/8	0.8760	+.001 / -.000	.8750	.9370	7/8	.015	1-5/16	.030	1/8	1/8
16L16-F	16L16-FK	1	1.0015	+.0015 / -.0000	1.0000	1.0935	1	.020	1-1/2	.045	5/32	5/32
18L18-F	18L18-FK	1-1/8	1.1265	+.0015 / -.0000	1.1250	1.2185	1-1/8	.020	1-11/16	.045	5/32	5/32
20L20-F	20L20-FK	1-1/4	1.2515	+.0015 / -.0000	1.2500	1.3435	1-1/4	.020	1-7/8	.045	5/32	5/32
24L24-F	24L24-FK	1-1/2	1.5020	+.002 / -.000	1.5000	1.6245	1-1/2	.025	2-1/4	.060	3/16	3/16

<sup>†</sup>When installed in housing bore shown above.

## Dimensions (Millimeters) — Type 5

Bearing Number	Nominal Bearing I.D.	Bearing I.D. <sup>†</sup> +.05, -0	Maximum Shaft Diameter	Housing Bore	Bearing Length "L" +0, -.4	Radius "R" Max.	Flange	
							Diameter ±.4	"t" +0 -.13
8000A	4	4.025	4	5.2	4	.4	7	.6
8001A	5	5.025	5	6.2	5	.4	8	.6
8002A	6	6.025	6	7.2	6	.4	9.5	.6
8003A	8	8.025	8	9.6	8	.4	12	.8
8004A	10	10.025	10	11.6	10	.4	15	.8
8005A	12	12.025	12	13.6	12	.4	18	.8
8006A	14	14.025	14	15.6	14	.4	21	.8
8007A	16	16.025	16	17.6	16	.4	24	.8
8008A	20	20.025	20	21.6	20	.4	30	.8
8009A	25	25.025	25	27.4	25	.4	37.5	1.2

<sup>†</sup>When installed in Housing Bore diameter shown.